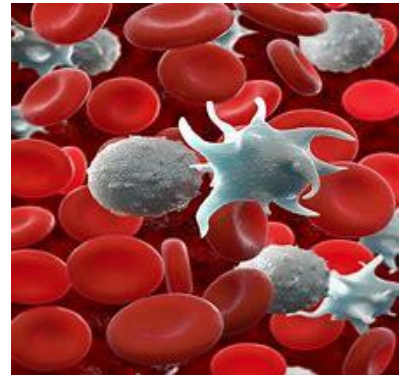


Dear RETRO Members;

Are you ready to **Shake Out**? October 15th marks earthquake preparedness day with the Great Washington Shake Out. This is a statewide opportunity to practice how to be safer during big earthquakes "Drop, Cover, Hold" <http://www.shakeout.org/washington/>. The Shake Out has also been organized to encourage you to review and update emergency preparedness plans and supplies, and to secure your space to minimize damage and injuries. Here is [link to resources](#) for creating your own Shake Out event.



Blood Borne Pathogens – You may think that that this is only affects hospital workers or EMT's, but there are other opportunities that can expose you to blood borne pathogens. Work injuries, puncture wound hazards - such as garment tag guns, or when performing regular housekeeping chores, are all opportunities for contact. You need to be observant and careful of what you are doing when exposed to blood and other body fluids in the workplace. Hepatitis spreads this way. If you are finding **needles in your restrooms**, or the perimeter of the store, provide training to exposed employees. Also get a sharps box installed in the restrooms to help protect your employees and customers.



RS webinar on ["A Guide to Needles in a Retail Environment"](#)

For safety meeting presentation information click [here](#).

[RS SafetyTV](#) has a video on this subject.

[Other helpful information from the Center for Disease Control is available here .](#)

Portable fire Extinguishers is the first line of defense to put fires under control at their start. Even if your company has automatic sprinklers or other means of fire protection, you need to ensure your portable fire extinguishers have regular inspections and a recharging program to ensure that it is fully operational. Also, review to ensure the capacity meets the need of your size of operation, and that your employees know how to use them. The links below will provide basic fire extinguisher operation, which will explain the P.A.S.S. method of putting out a small fire.



[RS SafetyTV](#) has videos on how to use and the [Safety Library](#) has additional information for your safety meeting. The **SAFEME** app has a module on [Fire Extinguisher](#) use that can be used as a great refresher course!

Engine Lift Chains - If you have engine hoists that require a lifting chain to get the motor or another heavy part out of the vehicle, **you must use a specific type of chain**. In L&I's mind, they consider these as rigging chains which would fall under [this rule](#) section 296-24-29423, subsection 1. When using engine lifts with just any chain, you are **not** in compliance with the safety rule. You need to have a specific chain material – alloy grade 80 or 100 – that has been tested under ASTM standards. This type of chain will have a tag or specific stamp on them designating load weight and chain material. You may already have an equipment supplier that can get you this type of chain. Another option for where to obtain these types of chain can be found [here](#).



Let me know if you have any questions or need further safety assistance.

Think safe. Act safe. Be safe.

Rick Means

Director of Safety and Education
Retail Association Services
618 Quince SE Olympia, WA 98501
rmeans@waretailservices.com
360-943-9198 ext. 118